

SCW Head-of-Wall Slide-Clip Connector

The SCW connectors offer 1" of upward and 1" of downward movement. They are primarily used in head-of-wall applications that require vertical movement relative to the structure. SCW connectors are often used to strengthen window and door jambs for projects that utilize slip or slotted track.

Material: 54 mil (16 ga.)

Finish: Galvanized (G90)

Installation:

- Use the specified type and number of anchors.
- Use the specified number of #14 shouldered screws (included).
Install shouldered screws in the slots adjacent to the No-Equal® stamp.
- Use a maximum of one screw per slot.

Codes: See p. 11 for Code Reference Key Chart

Ordering Information:

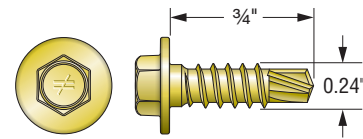
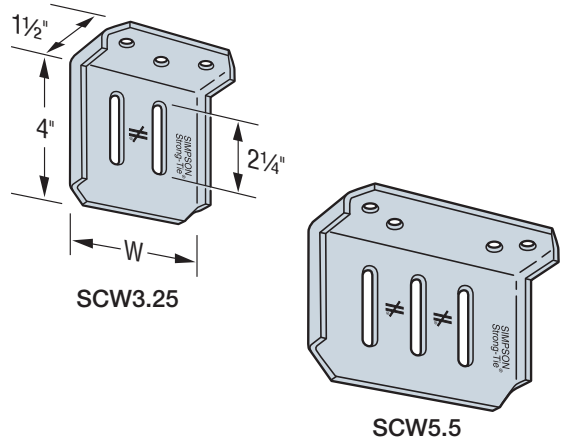
SCW3.25-KT contains:

- Box of 25 connectors
- 55 XLSH34B1414 #14 shouldered screws

SCW5.5-KT contains:

- Box of 25 connectors
- 83 XLSH34B1414 #14 shouldered screws

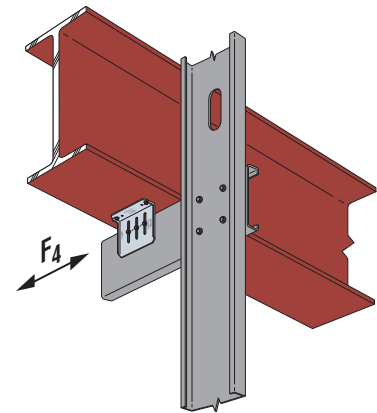
Note: Replacement #14 shouldered screws for SCW connectors are XLSH34B1414-RP83.



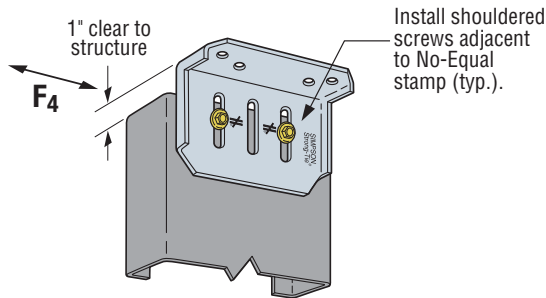
XLSH34B1414
#14 Shouldered Screw for Attachment to Stud Framing
(included)

SCW Allowable Connector Loads

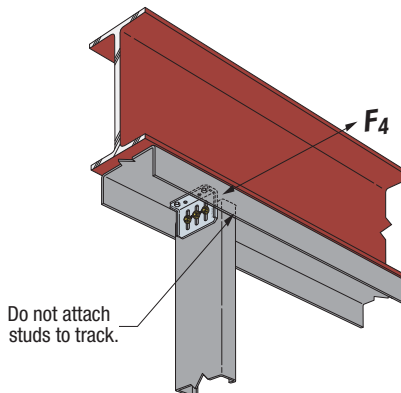
Model No.	Connector Material Thickness mil (ga.)	W (in.)	No. of #14 Shouldered Screws	Stud Thickness			Code Ref.
				33 mil (20 ga.)	43 mil (18 ga.)	54 mil (16 ga.)	
				F ₄	F ₄	F ₄	
SCW3.25	54 (16)	3 3/4	2	455	630	755	IBC, FL, LA
SCW5.5	54 (16)	5 1/2	2 ¹	455	630	995	
			3	455	630	1,220	



Typical SCW Installation with Stud Strut



SCW5.5 Installation with Two Shouldered Screws
(three shouldered screws and SCW3.25 similar)



Typical SCW Installation at Stud

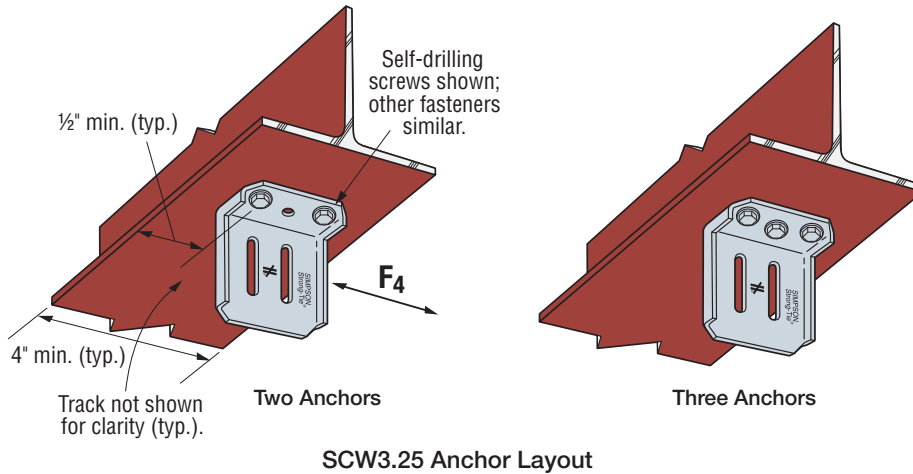
1. When the SCW5.5 connector is used with two shouldered screws, install screws in the outermost slots.
2. Allowable loads are based on clips installed with all holes in the anchor leg filled with #12–14 screws. For other anchorage installations, the capacity of the connection system will be the minimum of the tabulated value and the allowable load from the SCW Allowable Anchorage Loads table on p. 45.

SCW Head-of-Wall Slide-Clip Connector

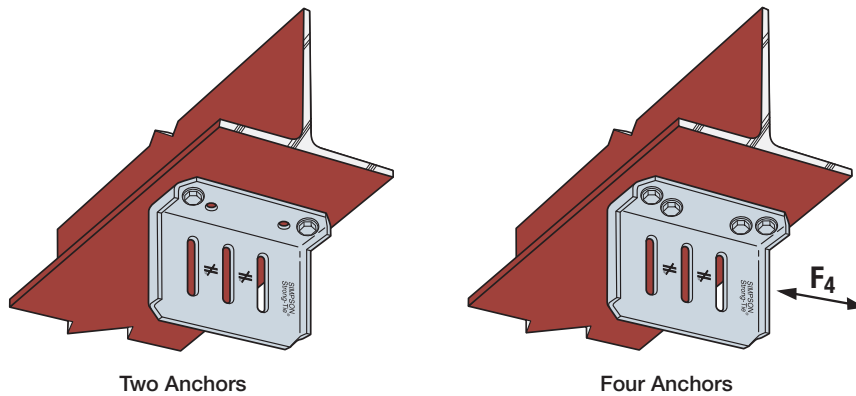
SCW Allowable Anchorage Loads (lb.)

Model No.	Anchorage Type	Minimum Base Material	No. of Anchors	Allowable Load F ₄
SCW3.25	#12-24 self-drilling screws	A36 steel 3/16" thick	2	715
			3	1,075
	Simpson Strong-Tie® 0.157" x 5/8" powder-actuated fasteners PDPAT-62KP	A36 steel 3/16" thick	2	745
			3	1,120
	Simpson Strong-Tie 1/4" x 1 3/4" Titen® 2 ³	Concrete f' _c = 2,500 psi	2	325
			3	400
SCW5.5	#12-24 self-drilling screws	A36 steel 3/16" thick	2	775
			4	1,550
	Simpson Strong-Tie 0.157" x 5/8" powder-actuated fasteners PDPAT-62KP	A36 steel 3/16" thick	2	745
			4	1,490
	Simpson Strong-Tie 1/4" x 1 3/4" Titen 2 ³	Concrete f' _c = 2,500 psi	2	325
			4	880

1. For additional important information, see General Information and Notes on p. 22.
2. Allowable loads are for clip anchorage only. The capacity of the connection system will be the minimum of the tabulated value and the allowable load from the SCW Allowable Connector Loads table on p. 44.
3. Tabulated values require a minimum 1 1/2" end distance for masonry screws in concrete.
4. See *Fastening Systems* catalog (C-F-2019) on strongtie.com for more information on Simpson Strong-Tie fasteners.



SCW3.25 Anchor Layout



SCW5.5 Anchor Layout