

Speed Clean™ DXS / SDS-plus® Drill Bits

Speed Clean DXS Dust Extraction Drill Bits
Code Tested with AT-XP®, SET-XP® and SET-3G™ Adhesives

Diameter (in.)	Shank Style	Drilling Depth (in.)	Overall Length (in.)	Model No.
7/16	SDS-plus – 2 cutter	7 1/2	13	DXS-PL04313
1/2	SDS-plus – 2 cutter	7 1/2	13	DXS-PL05013
9/16	SDS-plus – 2 cutter	10	15	DXS-PL05615
5/8	SDS-plus – 4 cutter	10	15	DXS-PL06215Q
11/16	SDS-plus – 4 cutter	12 1/2	18	DXS-PL06818Q
3/4	SDS-plus – 4 cutter	12 1/2	18	DXS-PL07518Q
3/4	SDS-max® – 4 cutter	12 1/2	21	DXS-MX07521Q
13/16	SDS-max – 4 cutter	15	25	DXS-MX08125Q
7/8	SDS-max – 4 cutter	15	25	DXS-MX08725Q
1	SDS-max – 4 cutter	17 1/2	27	DXS-MX10027Q
1 1/8	SDS-max – 4 cutter	20	29	DXS-MX11229Q
1 3/8	SDS-max – 4 cutter	25	34	DXS-MX13734Q



Carbide Drill Bits

SDS-plus Shank Bits — Retail Packs

Diameter (in.)	Drilling Depth (in.)	Overall Length (in.)	Quantity (per pack)	Model No.
5/32	4	6 1/4	25	MDPL01506-R25
3/16	2	4 1/4	25	MDPL01804-R25
	4	6 1/4	25	MDPL01806-R25
	6	8 1/4	25	MDPL01808-R25
	8	10	25	MDPL01810-R25
	10	12	25	MDPL01812-R25
	12	14	25	MDPL01814-R25
7/32	4	6 1/4	25	MDPL02106-R25
	6	8 1/4	25	MDPL02108-R25
	8 3/4	11	25	MDPL02111-R25
1/4	2	4 1/4	25	MDPL02504-R25
	4	6 1/4	25	MDPL02506-R25
	6	8 1/4	25	MDPL02508-R25
	8 3/4	11	25	MDPL02511-R25
5/16	4	6 1/4	25	MDPL03106-R25
3/8	4	6 1/4	25	MDPL03706-R25
	10	12 1/4	25	MDPL03712-R25
1/2	4	6 1/4	25	MDPL05006-R25
	10	12 1/4	25	MDPL05012-R25
5/8	6	8	20	MDPL06208-R20



SDS-plus
Retail Packs

SDS-plus® / SDS-max® Drill Bits

SDS-plus Shank Bit

SDS-plus bits use an asymmetrical-parabolic flute for efficient energy transmission and dust removal.

SDS-plus Shank Bits

Diameter (in.)	Drilling Depth (in.)	Overall Length (in.)	Model No.
5/32	2	4 1/4	MDPL01504
	4	6 1/4	MDPL01506
3/16	4	6 1/4	MDPL01806
	6	8 1/4	MDPL01808
	8	10	MDPL01810
	10	12	MDPL01812
	12	14	MDPL01814
7/32	4	6 1/4	MDPL02106
	6	8 1/4	MDPL02108
	8 3/4	11	MDPL02111
1/4	14	16	MDPL02116
	2	4 1/4	MDPL02504
	4	6 1/4	MDPL02506
	6	8 1/4	MDPL02508
1/4	9	11	MDPL02511
	12	14	MDPL02514
	14	16	MDPL02516
	5/16	4	6 1/4
10		12	MDPL03112
3/8	4	6 1/4	MDPL03706
	8	10 1/4	MDPL03710
	10	12 1/4	MDPL03712
	16	18	MDPL03718
	22	24	MDPL03724
7/16	4	6 1/4	MDPL04306
	10	12 1/4	MDPL04312
1/2	4	6 1/4	MDPL05006
	8	10 1/4	MDPL05010
	10	12 1/4	MDPL05012
	16	18	MDPL05018
	22	24	MDPL05024
9/16	4	6 1/4	MDPL05606
	10	12 1/4	MDPL05612
	16	18	MDPL05618
5/8	6	8	MDPL06208
	10	12	MDPL06212
	16	18	MDPL06218
	22	24	MDPL06224
1 1/16	6	8	MDPL06808
3/4	6	8	MDPL07508
	8	10	MDPL07510
	10	12	MDPL07512
	16	18	MDPL07518
	22	24	MDPL07524
7/8	6	8	MDPL08708
	10	12 1/4	MDPL08712
	16	18	MDPL08718
1	8	10	MDPL10010
	16	18	MDPL10018



SDS-plus Shank Bit

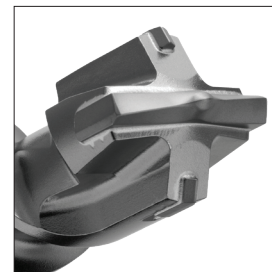
SDS-max and SDS-max Quad Head Shank Bits

Diameter (in.)	Drilling Depth (in.)	Overall Length (in.)	Model No.
3/8	7 1/2	13	MDMX03713
1/2	7 1/2	13	MDMX05013
	15 1/2	21	MDMX05021
9/16	7 1/2	13	MDMX05613
	15 1/2	21	MDMX05621
5/8	7 1/2	13	MDMX06213Q
	15 1/2	21	MDMX06221Q
	30 1/2	36	MDMX06236Q
1 1/16	15 1/2	21	MDMX06821Q
3/4	8	13	MDMX07513Q
	17	21	MDMX07521Q
	31	36	MDMX07536Q
13/16	17	21	MDMX08121Q
7/8	8	13	MDMX08713Q
	17	21	MDMX08721Q
1	8	13	MDMX10013Q
	17	21	MDMX10021Q
	31	36	MDMX10036Q
1 1/16	18	23	MDMX10623Q
1 1/8	12	17	MDMX11217Q
	17	21	MDMX11221Q
	31	36	MDMX11236Q
1 3/16	18	23	MDMX11823Q
1 1/4	10	15	MDMX12515Q
	18	23	MDMX12523Q
	31	36	MDMX12536Q
1 3/8	12	17	MDMX13717Q
	18	23	MDMX13723Q
1 1/2	18	23	MDMX15023Q
1 3/4	18	23	MDMX17523Q
2	18	23	MDMX20023Q

Model numbers ending with "Q" denote Quad Head.



SDS-max Shank Bit



Quad Head
Model numbers ending with "Q" denote quad-head bits.

Carbide Drill Bits

Spline Shank / Straight Shank Drill Bits

Carbide Drill Bits

Spline Shank Bits

Diameter (in.)	Drilling Depth (in.)	Overall Length (in.)	Model No.
3/8	8	13	MDSP03713
	11	16	MDSP03716
7/16	8	13	MDSP04313
1/2	8	13	MDSP05013
	11	16	MDSP05016
	17	22	MDSP05022
	31	36	MDSP05036
9/16	8	13	MDSP05613
	18	23	MDSP05623
5/8	8	13	MDSP06213
	11	16	MDSP06216 (Q)
	17	22	MDSP06222 (Q)
	31	36	MDSP06236 (Q)
11/16	11	16	MDSP06816
3/4	8	13	MDSP07513
	11	16	MDSP07516 (Q)
	17	22	MDSP07522 (Q)
	31	36	MDSP07536 (Q)
7/8	11	16	MDSP08716 (Q)
	17	22	MDSP08722 (Q)
	31	36	MDSP08736
1	11	16	MDSP10016
	17	22	MDSP10022 (Q)
	31	36	MDSP10036 (Q)
1 1/8	11	16	MDSP11216Q
	17	22	MDSP11222 (Q)
1 1/4	17	22	MDSP12522 (Q)
	31	36	MDSP12536Q
1 3/8	17	22	MDSP13722 (Q)
1 1/2	17	22	MDSP15022 (Q)
1 3/4	17	22	MDSP17522
2	17	22	MDSP20022

(Q) – Denotes quad head availability



Spline Shank Bit

Straight Shank Bits

Diameter (in.)	Drilling Depth (in.)	Overall Length (in.)	Model No.
1/8	1 3/8	3	MDB01203
9/16	4	6	MDB01806
1/4	2 1/8	4	MDB02504
	4	6	MDB02506
	10	12	MDB02512
5/16	4	6	MDB03106
3/8	4	6	MDB03706
	10	12	MDB03712
7/16	4	6	MDB04306
1/2	4	6	MDB05006
	10	12	MDB05012
5/8	3 1/2	6	MDB06206
3/4	4	6	MDB07506



Straight Shank Bit

Straight Shank Bits – Retail Packs

Diameter (in.)	Drilling Depth (in.)	Overall Length (in.)	Quantity (per pack)	Model No.
3/16	4	6	25	MDB01806-R25
1/4	2 1/8	4	25	MDB02504-R25
	4	6	25	MDB02506-R25
5/16	4	6	25	MDB03106-R25
3/8	4	6	25	MDB03706-R25
1/2	4	6	25	MDB05006-R25



Straight Shank Bits Retail Packs

Core Bits

Simpson Strong-Tie® core bits are made to the same exacting standards as our standard carbide-tipped drill bits. They utilize a centering bit to facilitate accurate drilling in combination hammer/drill mode.

Core Bits with Centering Bit – SDS-max® Shank

Diameter (in.)	Drilling Depth (in.)	Overall Length (in.)	Model No.
2	6 1/4	22	CBMX20022
2 5/8	6 1/4	22	CBMX26222
3 1/8	6 1/4	22	CBMX31222
3 1/2	6 1/4	22	CBMX35022
4	6 1/4	22	CBMX40022
5	6 1/4	22	CBMX50022

Note: With 1-piece bits, once coring is begun, the centering bit must be removed using ejector pin. Core bit bodies are 2 1/16" deep.



Core Bit Transfers Energy Efficiently



Core Bit Center Pilot Bit (CTRBTf04304)



Ejector Key (CDBEJKEY)