

# LGUM/HGUM

## Heavy-Duty Face-Mount Beam/Girder Hangers for Concrete and GFCMU

High-capacity beam or girder hangers for concrete or masonry applications. Installation is made easier using Strong-Drive® SDS Heavy-Duty Connector screws (provided) into the wood member and Titen HD® anchors (provided) into the masonry.

**Material:** See table

**Finish:** Galvanized

**Installation:**

- Use all specified fasteners (included).
- Attach hanger to a concrete or grout-filled CMU wall using Titen HD anchors. Note the following:
  - Drill holes using drill bits equal in diameter to the specified Titen HD anchor.
  - Holes shall be drilled  $\frac{1}{2}$ " deeper than the specified Titen HD length (i.e.  $4\frac{1}{2}$ " for a 4" long Titen HD anchor)
  - Caution: Oversized holes in the base material will reduce or eliminate the mechanical interlock of the threads with the base material and will reduce the anchor's load capacity.

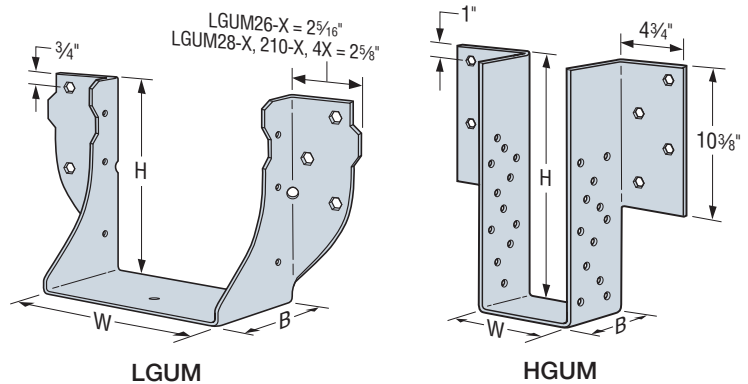
• Carbon-steel Titen HD is not recommended for exposed exterior applications.

• Provide moisture barrier between beam and wall per jurisdictional requirements.

**Options:**

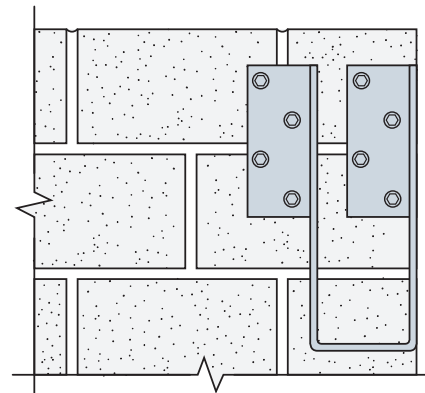
- For HGUM only — other seat widths and hanger heights available. Order as "X" version.
- HGUM available with one flange concealed. See p. 248 for reduced load at end of wall and outside corner.
- LGUM/HGUM available in skews up to  $45^\circ$ . See Hanger Options, p. 248.
- For stainless-steel options, see Simpson Strong-Tie engineering letter L-C-CMUHGRSS at [strongtie.com](http://strongtie.com).

**Codes:** See p. 11 for Code Reference Key Chart

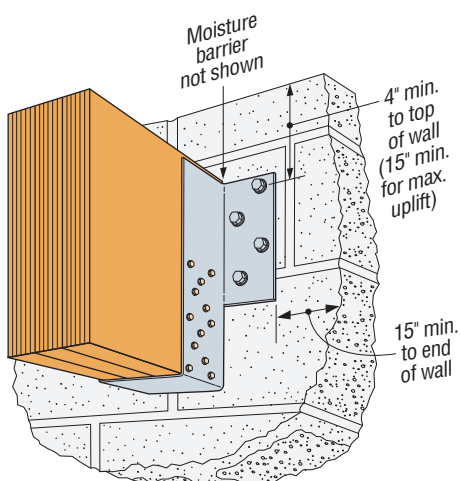


LGUM

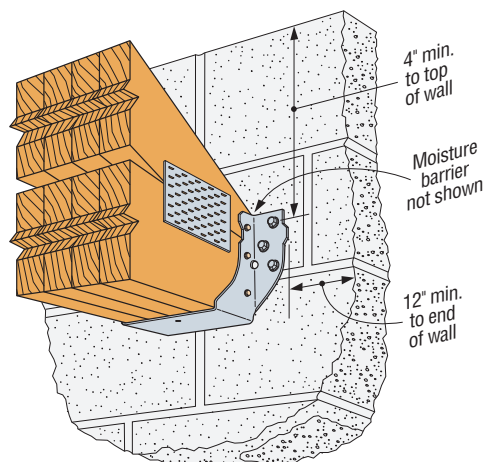
HGUM



HGUM with Right Flange Concealed  
(see p. 248 for reduction factors)



Typical HGUM Installation



Typical LGUM Installation

# LGUM/HGUM

## Heavy-Duty Face-Mount Beam/Girder Hangers for Concrete and GFCMU (cont.)

These products are available with additional corrosion protection. For more information, see p. 14.

SS For stainless-steel fasteners, see p. 21.

Model No.	Ga.	Dimensions (in.)			Fasteners (in.)		Allowable Loads (DF, SP, LVL, PSL, LSL)				Code Ref.	
		W	H	B	GFCMU and Concrete	Joist	Uplift (160)		Download (100/115/125)			
					Titen HD® Anchors	Strong-Drive® SDS Screws	GFCMU	Concrete	GFCMU	Concrete		
<b>Double 2x Sizes</b>												
SS LGUM26-2-SDS	12	3 <sup>5</sup> / <sub>16</sub>	5 <sup>7</sup> / <sub>16</sub>	4	(4) 3/8 x 4	(4) 1/4 x 2 1/2	1,430	1,430	5,595		FL	
SS LGUM28-2-SDS	12	3 <sup>5</sup> / <sub>16</sub>	7 <sup>3</sup> / <sub>16</sub>	4	(6) 3/8 x 4	(6) 1/4 x 2 1/2	2,435	2,435	8,250			
SS LGUM210-2-SDS	12	3 <sup>5</sup> / <sub>16</sub>	9 <sup>3</sup> / <sub>16</sub>	4	(8) 3/8 x 4	(8) 1/4 x 2 1/2	3,575	3,575	9,575			
<b>Triple 2x Sizes</b>												
SS LGUM26-3-SDS	12	4 <sup>15</sup> / <sub>16</sub>	5 1/2	4	(4) 3/8 x 4	(4) 1/4 x 2 1/2	1,430	1,430	5,610			
SS LGUM28-3-SDS	12	4 <sup>15</sup> / <sub>16</sub>	7 1/4	4	(6) 3/8 x 4	(6) 1/4 x 2 1/2	2,435	2,435	8,290			
SS LGUM210-3-SDS	12	4 <sup>15</sup> / <sub>16</sub>	9 1/4	4	(8) 3/8 x 4	(8) 1/4 x 2 1/2	3,575	3,575	9,715			
<b>Quadruple 2x Sizes</b>												
SS LGUM26-4-SDS	12	6 <sup>9</sup> / <sub>16</sub>	5 <sup>7</sup> / <sub>16</sub>	4	(4) 3/8 x 4	(4) 1/4 x 2 1/2	1,430	1,430	5,625			
SS LGUM28-4-SDS	12	6 <sup>9</sup> / <sub>16</sub>	7 <sup>3</sup> / <sub>16</sub>	4	(6) 3/8 x 4	(6) 1/4 x 2 1/2	2,435	2,435	8,335			
SS LGUM210-4-SDS	12	6 <sup>9</sup> / <sub>16</sub>	9 <sup>3</sup> / <sub>16</sub>	4	(8) 3/8 x 4	(8) 1/4 x 2 1/2	3,575	3,575	9,860			
<b>4x Sizes</b>												
SS LGUM46-SDS	12	3 <sup>5</sup> / <sub>16</sub>	4 <sup>7</sup> / <sub>16</sub>	4	(4) 3/8" x 4"	(4) 1/4" x 2 1/2"	1,430	1,430	5,600			
SS LGUM48-SDS	12	3 <sup>5</sup> / <sub>16</sub>	6 <sup>7</sup> / <sub>16</sub>	4	(6) 3/8" x 4"	(6) 1/4" x 2 1/2"	2,435	2,435	8,260			
SS LGUM410-SDS	12	3 <sup>5</sup> / <sub>16</sub>	8 <sup>7</sup> / <sub>16</sub>	4	(8) 3/8" x 4"	(8) 1/4" x 2 1/2"	3,575	3,575	9,620			
<b>Engineered Wood and Structural Composite Lumber Sizes (Heavy Duty)</b>												
SS HGUM5.25-SDS	7	5 1/4	11 to 30	5 1/4	(8) 5/8" x 5"	(24) 1/4" x 2 1/2"	4,105	5,075	14,025	14,770		
SS HGUM5.50-SDS	7	5 1/2		5 1/4	(8) 5/8" x 5"	(24) 1/4" x 2 1/2"	4,105	5,075	14,000	14,915		
SS HGUM7.00-SDS	7	7		5 1/4	(8) 5/8" x 5"	(24) 1/4" x 2 1/2"	4,105	5,075	13,840	14,915		
SS HGUM7.25-SDS	7	7 1/4		5 1/4	(8) 5/8" x 5"	(24) 1/4" x 2 1/2"	4,105	5,075	13,810	14,915		
SS HGUM9.00-SDS	7	9		5 1/4	(8) 5/8" x 5"	(24) 1/4" x 2 1/2"	4,105	5,075	13,625	14,915		

- Uplift loads have been increased for earthquake or wind loading with no further increase allowed. Reduce where other loads govern.
- Tabulated uplift loads are based on 4" minimum distance to top of wall. For HGUM installations with 15" minimum distance to top of wall, uplift loads are 6,180 lb. for GFCMU and 6,585 for concrete.
- Concrete shall have a minimum compressive strength of  $f'_c = 2,500$  psi.
- Grout-filled CMU (GFCMU) shall have a minimum compressive strength of  $f'_m = 1,500$  psi.
- LGUM must be installed on minimum 6"-thick wall and HGUM on minimum 8"-thick wall. (Nominal values for GFCMU.)
- Titen HD® anchors may be installed into the head or bed joints.
- SDS screws may be installed through metal truss plates as approved by the Truss Designer, provided the requirements of ANSI/TPI 1-2014, Sections 7.5.3.4 and 8.9.2 are met (predrilling required through the plate using a 5/32" bit maximum).
- For stainless-steel options, see Simpson Strong-Tie engineering letter L-C-CMUHGRSS at [strongtie.com](http://strongtie.com).
- Fasteners:** SDS screws are Simpson Strong-Tie® Strong-Drive SDS Heavy-Duty Connector screws. See pp. 21–22 for fastener information.

# LGUM/HGUM

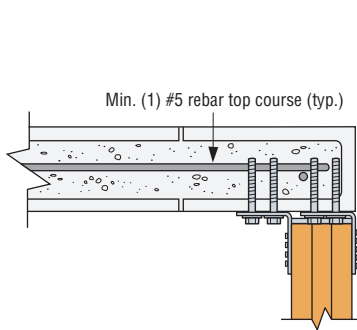
## Heavy-Duty Face-Mount Beam/Girder Hangers for Concrete and GFCMU (cont.)

These products are available with additional corrosion protection. For more information, see p. 14.

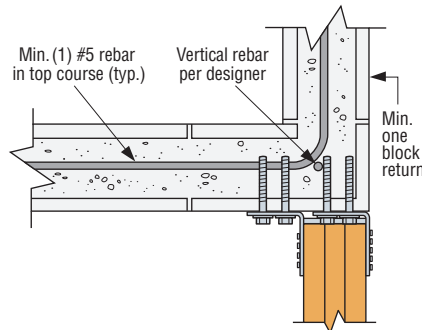
**SS** For stainless-steel fasteners, see p. 21.

### Concealed Flange — Allowable Loads with One Flange Concealed

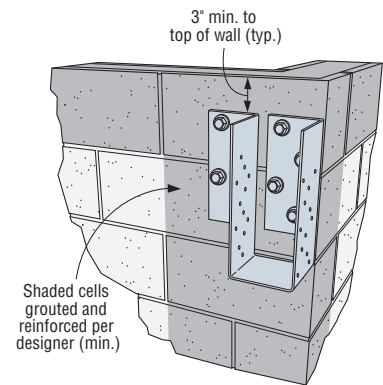
Model No.	W (in.)	H (in.)	Fasteners		End of Wall				Outside Corner	
			GFCMU and Concrete	Joist	GFCMU Wall DF/SP/SCL Beam		Concrete Wall DF/SP/SCL Beam		GFCMU and Concrete Wall DF/SP/SCL Beam	
			Titen HD® Anchors	SDS Screws	Uplift (160)	Download	Uplift (160)	Download	Uplift (160)	Download
<b>SS</b> HGUM	5¼ to 9	11 to 30	(8) ⅝" x 5"	(24) ¼" x 2½"	1,285	5,750	3,150	7,025	3,150	7,555



Typical Concealed Flange HGUM Installation at End of Wall



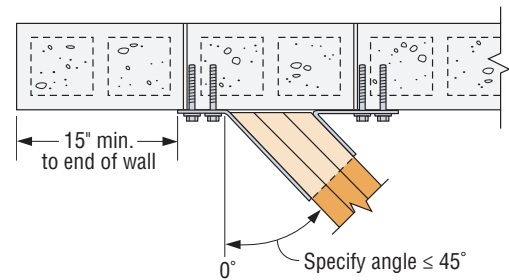
Typical Concealed Flange HGUM Right Installation at Outside Corner



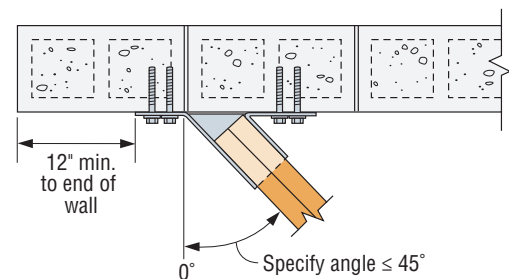
Typical Concealed Flange HGUM Installation at Outside Corner (concealed right shown)

### LGUM/HGUM Allowable Loads for Skewed (L/R) Applications

Model No.	Fasteners		Allowable Loads GFCMU and Concrete (DF, SP, LVL, PSL, LSL)	
	GFCMU and Concrete	Joist	Uplift (160)	Download (100/115/125)
	Titen HD® Anchors	SDS Screws		
<b>SS</b> LGUM26-2X	(4) ⅝" x 4"	(4) ¼" x 2½"	565	1,965
<b>SS</b> LGUM26-3X				
<b>SS</b> LGUM26-4X				
<b>SS</b> LGUM46X				
<b>SS</b> LGUM28-2X	(6) ⅝" x 4"	(6) ¼" x 2½"	1,085	3,080
<b>SS</b> LGUM28-3X				
<b>SS</b> LGUM28-4X				
<b>SS</b> LGUM48X				
<b>SS</b> LGUM210-2X	(8) ⅝" x 4"	(8) ¼" x 2½"	1,605	4,190
<b>SS</b> LGUM210-3X				
<b>SS</b> LGUM210-4X				
<b>SS</b> LGUM410X				
<b>SS</b> HGUM5.25X	(8) ⅝" x 5"	(8) ¼" x 2½"	1,430	6,455
<b>SS</b> HGUM5.50X				
<b>SS</b> HGUM7.00X	(8) ⅝" x 5"	(8) ¼" x 2½"	1,440	5,820
<b>SS</b> HGUM7.25X				
<b>SS</b> HGUM9.00X				



Top View HGUM Skewed Right Bevel Cut



Top View LGUM Skewed Right Square Cut