

| D | L | C | T | WT. PER C |
|---------|-----|--------|----|-----------|
| 1/2"-13 | 6" | 1 5/8" | 2" | 32 |
| 1/2"-13 | 8" | 1 5/8" | 2" | 41 |
| 1/2"-13 | 10" | 1 5/8" | 2" | 50 |
| 1/2"-13 | 12" | 1 5/8" | 2" | 59 |
| 1/2"-13 | 14" | 1 5/8" | 2" | 67 |
| 1/2"-13 | 16" | 1 5/8" | 2" | 77 |
| 1/2"-13 | 18" | 1 5/8" | 2" | 85 |
| 1/2"-13 | 24" | 2" | 4" | 113 |
| 5/8"-11 | 6" | 3" | 3" | 60 |
| 5/8"-11 | 8" | 3" | 3" | 74 |
| 5/8"-11 | 10" | 3" | 3" | 87 |
| 5/8"-11 | 12" | 3" | 4" | 102 |
| 5/8"-11 | 14" | 3" | 4" | 115 |
| 5/8"-11 | 15" | 3" | 4" | 122 |
| 5/8"-11 | 16" | 3" | 4" | 129 |
| 5/8"-11 | 18" | 3" | 4" | 143 |
| 5/8"-11 | 24" | 3" | 4" | 185 |
| 3/4"-10 | 8" | 3" | 4" | 109 |
| 3/4"-10 | 10" | 3" | 4" | 135 |
| 3/4"-10 | 12" | 3" | 5" | 156 |
| 3/4"-10 | 14" | 3" | 5" | 167 |
| 3/4"-10 | 15" | 3" | 5" | 188 |
| 3/4"-10 | 16" | 3" | 5" | 199 |
| 3/4"-10 | 18" | 3" | 6" | 209 |
| 3/4"-10 | 20" | 3" | 6" | 240 |
| 3/4"-10 | 24" | 3" | 6" | 272 |
| 3/4"-10 | 30" | 3" | 6" | 344 |
| 3/4"-10 | 36" | 3" | 6" | 401 |
| 7/8"-9 | 12" | 3" | 5" | 206 |
| 7/8"-9 | 15" | 3" | 6" | 247 |
| 7/8"-9 | 16" | 3" | 6" | 261 |

AVAILABLE IN PLAIN, SOME SIZES AVAILABLE IN HOT DIP GALVANIZED
 ZINC PLATED, 304SS, AND 316SS UPON SPECIAL ORDER REQUEST AT CURRENT MARKET PRICE
 ITEMS ARE PITCH BODY UNDERSIZED WITH ROLLED THREADS
 COMMERCIAL NUT FIT ** NOT UNC-2A FIT **
 USA DOMESTIC MANUFACTURE
SOLD BULK NO NUTS UNLESS SPECIFICALLY QUOTED OTHERWISE

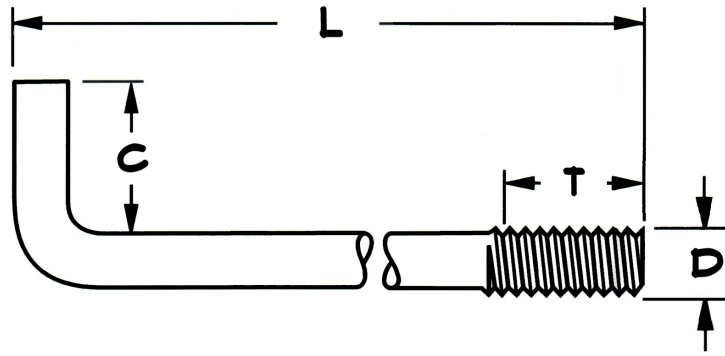
DIAMETERS 1/2"-13 THRU 5/8"-11 GENERALLY MADE FROM COLD DRAWN 1006-1018 COIL STEEL
 DIAMETERS 3/4"-10 AND UP GENERALLY MADE FROM ASTM F1554 GR 55 S1 HOT ROLL ROUNDS
 HOT DIP GALVANIZED PER ASTM A153
 ZINC PLATING IS PER ASTM F1941 TYPE V, CLASS SC., 0002 MIN THICKNESS
 304SS PER ASTM A193 B8 CLASS 1 GENERALLY WHEN MATERIAL AVAILABLE
 316SS PER ASTM A193 B8M CLASS 1 GENERALLY WHEN MATERIAL AVAILABLE

FASTENERS PLUS

FIND IT FAST. GET IT FAST.

STANDARD 90 DEGREE L SHAPED FOUNDATION ANCHOR

THE INFORMATION ON THIS DRAWING IS INTENDED FOR REFERENCE ONLY
 TOLERANCES: (FRACTIONAL = NO LESS THAN +/- 1/8") ANGULAR: (+/- 5°)



| D | L | C | T | WT. PER C |
|----------|-----|----|----|-----------|
| 7/8"-9 | 16" | 3" | 6" | 261 |
| 7/8"-9 | 18" | 3" | 6" | 289 |
| 7/8"-9 | 20" | 3" | 6" | 317 |
| 7/8"-9 | 24" | 3" | 6" | 371 |
| 1"-8 | 10" | 3" | 5" | 234 |
| 1"-8 | 12" | 3" | 5" | 281 |
| 1"-8 | 14" | 3" | 5" | 319 |
| 1"-8 | 15" | 3" | 6" | 338 |
| 1"-8 | 16" | 3" | 6" | 356 |
| 1"-8 | 18" | 3" | 6" | 394 |
| 1"-8 | 21" | 3" | 6" | 441 |
| 1"-8 | 24" | 3" | 6" | 496 |
| 1"-8 | 30" | 3" | 6" | 619 |
| 1"-8 | 36" | 3" | 6" | 736 |
| 1"-8 | 42" | 3" | 6" | 835 |
| 1"-8 | 48" | 3" | 6" | 966 |
| 1 1/4"-7 | 14" | 4" | 6" | 518 |
| 1 1/4"-7 | 15" | 4" | 6" | 550 |
| 1 1/4"-7 | 16" | 4" | 6" | 592 |
| 1 1/4"-7 | 18" | 4" | 6" | 635 |
| 1 1/4"-7 | 24" | 4" | 6" | 827 |
| 1 1/4"-7 | 30" | 4" | 6" | 997 |
| 1 1/4"-7 | 36" | 4" | 6" | 1,168 |
| 1 1/4"-7 | 42" | 4" | 6" | 1,346 |
| 1 1/4"-7 | 48" | 5" | 6" | 1,550 |

AVAILABLE IN PLAIN, SOME SIZES AVAILABLE IN HOT DIP GALVANIZED
 ZINC PLATED, 304SS, AND 316SS UPON SPECIAL ORDER REQUEST AT CURRENT MARKET PRICE
 ITEMS ARE PITCH BODY UNDERSIZED WITH ROLLED THREADS
 COMMERCIAL NUT FIT ** NOT UNC-2A FIT **
SOLD BULK NO NUTS UNLESS SPECIFICALLY QUOTED OTHERWISE

DIAMETERS 1/2"-13 THRU 5/8"-11 GENERALLY MADE FROM COLD DRAWN 1006-1018 COIL STEEL
 DIAMETERS 3/4"-10 AND UP GENERALLY MADE FROM ASTM F1554 GR 55 S1 HOT ROLL ROUNDS
 HOT DIP GALVANIZED PER ASTM A153
 ZINC PLATING IS PER ASTM F1941 TYPE V, CLASS SC., 0002 MIN THICKNESS
 304SS PER ASTM A193 B8 CLASS 1 GENERALLY WHEN MATERIAL AVAILABLE
 316SS PER ASTM A193 B8M CLASS 1 GENERALLY WHEN MATERIAL AVAILABLE

FASTENERS PLUS

FIND IT FAST. GET IT FAST.

STANDARD 90 DEGREE L SHAPED FOUNDATION ANCHOR

THE INFORMATION ON THIS DRAWING IS INTENDED FOR REFERENCE ONLY
 TOLERANCES: (FRACTIONAL = NO LESS THAN +/- 1/8") ANGULAR: (+/- 5°)