

Ready-Track® Framing

Ready-Track framing is the fast and dependable way to frame curved walls on the jobsite. Simple to bend into smooth curves, it holds its shape without fasteners for easy positioning and installation.

- Ideal for curved walls, stairwells, soffits, clouds and complicated compound radiuses
- Handles almost any application when you need material curved along the flange
- Screw holes in the bottom web allow the top-track radius to be locked down for easy replication, once fitted over the bottom track
- Optional screw holes in the leg allow the radius to be easily locked down from the side

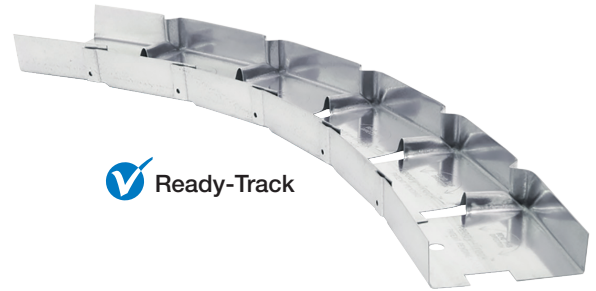
Product Information

Model No.	Track Width (in.)	Length (ft.)	Quantity per Bundle*
20 Gauge (30 mil)			
RT250-8	2½	8	12
RT250-10	2½	10	10
RT350-8	3½	8	12
RT362-8	3¾	8	12
RT362-10	3¾	10	10
RT400-8	4	8	6
RT400-10	4	10	10
RT550-8	5½	8	6
RT600-8	6	8	6
RT600-10	6	10	10
18 Gauge (43 mil)			
RT362-8-18	3¾	8	12
RT362-10-18	3¾	10	10
RT600-8-18	6	8	6
RT600-10-18	6	10	10

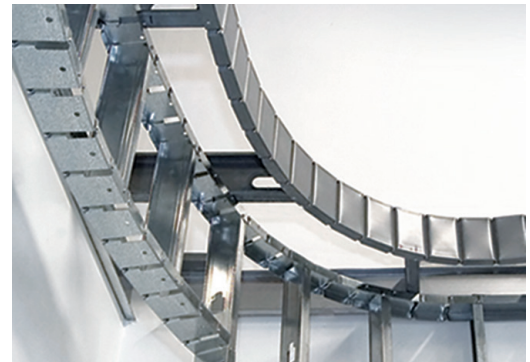
*Product is shipped in bundled, straight sections.



This product is preferable to similar connectors because of a) easier installation, b) higher loads, c) lower installed cost, or a combination of these features.



Ready-Track



Typical Ready-Track Installation

Curved Hand-Bendable Framing

Ready-Arch® Framing



This product is preferable to similar connectors because of a) easier installation, b) higher loads, c) lower installed cost, or a combination of these features.

Creating arched openings and designs is simpler than ever with Ready-Arch framing members. Round, elliptical or s-shapes are all easy to form on the jobsite without any cutting or additional reinforcement. Ready-Arch members are also ideal for more challenging applications where material needs to curve along the web.

- Ideal for soffits, arches, light coves and elliptical or eyebrow curves for windows and doorways
- 20-gauge (30 mil) steel holds its shape without any fasteners
- Installs to cold-formed steel or wood framing

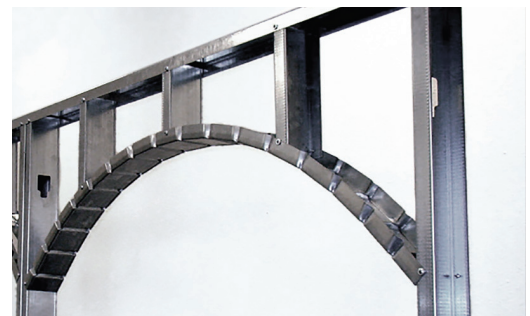
Product Information

Model No.	Width (in.)	Length (ft.)	Quantity per Bundle*
RA362-8	3¾	8	10
RA600-8	6	8	6

*Product is shipped in bundled, straight sections.



Ready-Arch



Typical Ready-Arch Installation