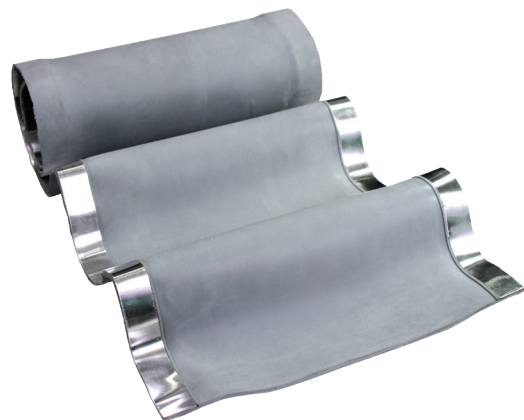


FEATURES AND BENEFITS

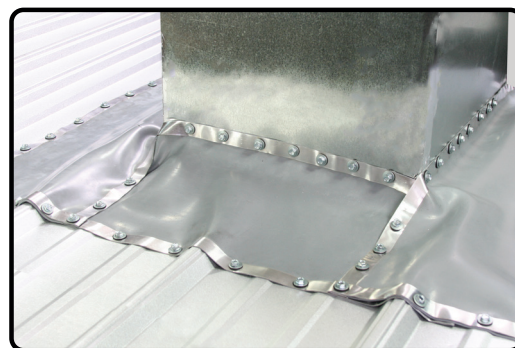
- LINEAR EXPANSION JOINT is manufactured from EPDM rubber to resist UV light, ozone, & temperature extremes.
- There are flexible aluminum bands integrated into each width of the material that conform to any metal roof panel configuration.
- Applications include transition walls, parapet walls, stepped roofs, square vents.

EXPANSION JOINT **Roofjack**[™]



WIDTH	LENGTH	COLOR MATERIAL	WEIGHT PER CARTON
9" (228mm)	3ft (914mm)	Gray EPDM	1.8 LBS.
9" (228mm)	12ft (3.65meters)	Gray EPDM	5.18 LBS.
9" (228mm)	33ft (10meters)	Gray EPDM	13.37 LBS.
12" (305mm)	3ft (914mm)	Gray EPDM	2.28 LBS.
12" (305mm)	12ft (3.65meters)	Gray EPDM	6.10 LBS.
12" (305mm)	33ft (10meters)	Gray EPDM	15.02 LBS.

	EPDM 500	SILICONE
Advanced Ozone Resistance Tested to...	70 hr @500 pphm	70 hr @ 500 pphm
High Temperature Resistance Tested to		
Intermittent	+135°C (+275°F)	+260°C (+500°F)
Continuous	+100°C (+212°F)	+225°C (+435°F)
Low Temperature Resistance tested to...	-55°C (-65°F)	-74°C (-100°F)
Tensile Set Maximum...	10MPa (1450psi)	5MPa (700psi)
Compression Set Maximum...	25%	50%



CHECK OUT THESE OTHER ROOFJACK PRODUCTS

RoofjackRD[™] RoofjackSQ[™] RETROFIT RoofjackRD[™] RETROFIT RoofjackSQ[™] EXTREME Roofjack[™] FIX-A-FLASH RoofjackSQ[™]

