

# Crack Injection Contractor Kit – Your Complete Professional Solution



## One Kit. Total Concrete Repair.

Introducing the Crack Injection Contractor Kit from Simpson Strong-Tie. Designed for professionals tackling structural repairs of cracked concrete, this all-inclusive package combines everything needed to repair approximately 30 linear feet\* of cracked concrete. This convenient kit provides contractors with a commercial-grade solution for structural concrete repairs. Perfect for your mid- to large-sized structural repair jobs, it's your go-to for efficient, reliable results.

### Key Features

- **All-Inclusive package:** Includes CI-LV™ epoxy, CI-PO™ paste, injection ports, mixing nozzles and accessories
- **Professional grade:** Meets ASTM C881 and AASHTO M235 standards; NSF/ANSI 61 approved
- **Versatile application:** Low-viscosity (350 cP) epoxy handles hairline 0.002" (0.051 mm) to 0.25" (6 mm) cracks
- **Convenience:** Everything you need to successfully complete your crack-repair project








### Common Applications

- Pressure-injection of cracks in structural concrete
- Gravity-feed of horizontal concrete cracks

\*Repairs approximately 30 linear feet of 1/16"-wide cracks in 8"-thick concrete. Coverage may vary depending on crack condition and application method.

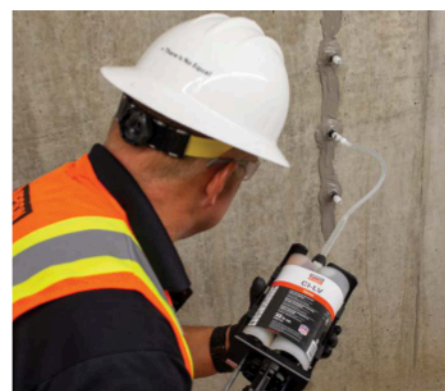
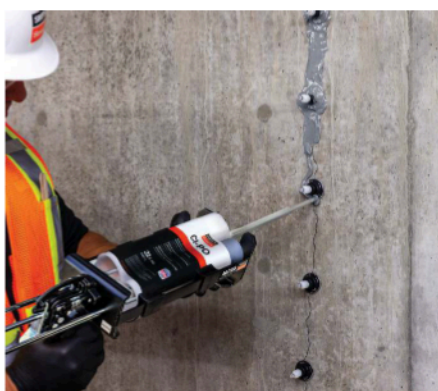
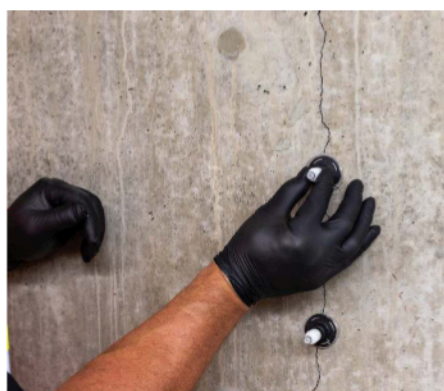
SKU	Description
CI-LVPO-KT	Crack injection contractor kit
CI-LVPO-KT-TL	Crack injection contractor kit with tool



Kit Contents		
Epoxies	 <b>x 4</b> CI-LV	 <b>x 2</b> CI-PO
Ports and Fittings	 <b>x 60</b> EIP-EZA	 <b>x 20</b> EIPX-EZ
		 <b>x 6</b> EIF-EZ
Nozzles	 <b>x 10</b> EMNO22	 <b>x 7</b> AMN19Q












ADT30S dispensing tool  
included with kit CI-LVPO-KT-TL



## Restock as Needed — All Components Available Individually

For additional products, installation instructions and technical details, visit [strongtie.com/crackrepair](http://strongtie.com/crackrepair).

Model No.	Description	Image	Features	Packaging Qty.
CILV32	CI-LV™ low-viscosity structural injection epoxy		<ul style="list-style-type: none"> <li>Meets ASTM C881 and AASHTO M235 Type I/II, Grade 1, Class B, and Type I/II and I/IV, Grade 1, Class C</li> <li>NSF/ANSI/CAN 61</li> <li>Moisture-tolerant</li> <li>(1) Optimix® mixing nozzle (EMN022)</li> </ul>  	1
CIP032	CI-PO™ paste-over and structural repair epoxy		<ul style="list-style-type: none"> <li>Rapid setting, low odor</li> <li>NSF/ANSI/CAN 61</li> <li>Moisture-tolerant</li> <li>(1) Adhesive mixing nozzle (AMN19Q)</li> </ul>  	1
EIF-EZ	E-Z-Click™ injection fitting		<ul style="list-style-type: none"> <li>Connects CILV32 mixing nozzle to E-Z-Click injection ports</li> <li>No-leak fittings</li> <li>Fast attachment and removal</li> </ul>	1
EIP-EZA	E-Z-Click flush-mount injection ports		<ul style="list-style-type: none"> <li>Surface mount ports</li> <li>One-piece, no-leak design</li> <li>Push/pull to open/close port</li> </ul>	100
EIP-EZAKT	E-Z-Click flush-mount injection ports and E-Z-Click injection fitting		<ul style="list-style-type: none"> <li>Injection system fittings kit</li> <li>(20) E-Z-Click flush-mount injection ports</li> <li>(1) E-Z-Click injection fitting</li> </ul>	20 ports 1 fitting
EIPX-EZ-RP20	E-Z-Click corner-mount/drilled-in injection ports		<ul style="list-style-type: none"> <li>Corner-mount/drilled-in ports</li> <li>One-piece, no-leak design</li> <li>Push/pull to open/close ports</li> </ul>	20
EIPX-EZKT	E-Z-Click corner-mount/drilled-in injection ports and E-Z-Click injection fitting		<ul style="list-style-type: none"> <li>Injection system fittings kit</li> <li>(20) E-Z-Click corner-mount/drilled-in injection ports</li> <li>(1) E-Z-Click injection fitting</li> </ul>	20 ports 1 fitting
EMN022-RP6	Optimix mixing nozzle for epoxies		<ul style="list-style-type: none"> <li>(6) Mixing nozzles for CILV32 cartridges</li> <li>(6) Retaining nuts</li> </ul>	6
AMN19Q-RP5	Adhesive mixing nozzle		<ul style="list-style-type: none"> <li>(5) Mixing nozzles for CIP032 cartridges</li> <li>Integrated nut</li> </ul>	5
ADT30S	Manual dispensing tool		<ul style="list-style-type: none"> <li>Dispensing tool for CIP032 and CILV32</li> </ul>	1
ADTA30P	Pneumatic dispensing tool		<ul style="list-style-type: none"> <li>Pneumatic dispensing tool for CIP032 and CILV32</li> </ul>	1