

Post-Frame Undersaddle Hanger

Introducing the new PFUD24 and PFUDS24 undersaddle hangers, our newest innovation for post-frame construction. These hangers support ceiling joists with ease: the PFUD24 fits 1-ply trusses, while the PFUDS24 accommodates 2-ply trusses. To minimize the labor required for hanger layout, the hangers are double-sided so that one hanger supports ceiling joists on each side of a truss. Layout is further simplified by virtue of the continuous bottom seat that abuts the bottom face of the truss bottom chord and provides automatic vertical alignment. For single-side applications, simply field bend and separate the hanger along perforations to create 2 face-mounted options.

Features:

- Reduces connector layout labor costs by half, as each unit supports two joists versus separate face-mounted hangers
- Load-rated for joist tension forces, ideal for ceiling panels acting as diaphragms or bottom chord truss bracing
- Easily halved along undersaddle perforations for one-sided use, eliminating the need for additional face-mounted hangers
- Offers greater reliability and load capacity than toe-nailed ceiling joists
- Compatible with both nails and screws for load-rated performance
- Fully tested and code-listed, ensuring strength, durability, and confidence for specifiers and builders

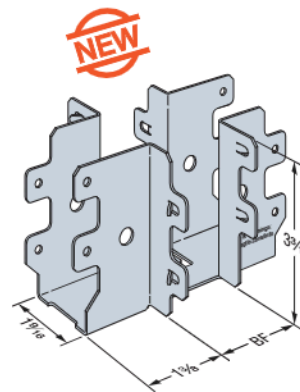
Material: 20 gauge

Finish: Galvanized

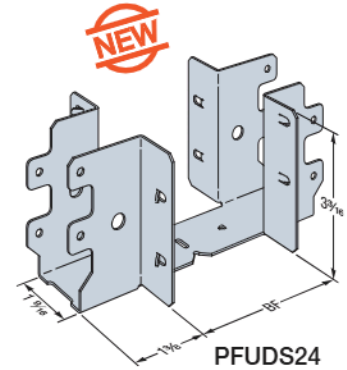
Installation:

- Use all specified fasteners; see General Notes
- As defined by the face flange tab features, face nails or screws shall be driven into the truss/header at a 45° angle
- When F_2 tension is required, fill triangle holes in the hanger seat
- For single-side joist applications, bend/separate hangers along undersaddle perforations

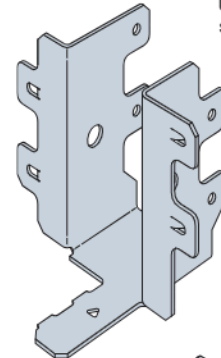
Codes: See p. 12 for Code Reference Key Chart



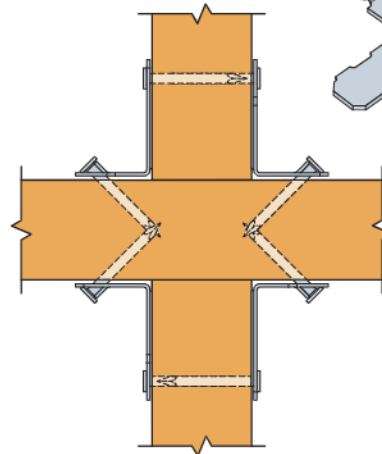
PFUD24
for 1-Ply Trusses
US Patent Pending, see
strongtie.com/patents



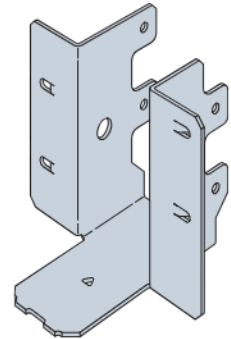
PFUDS24
for 2-Ply Trusses
US Patent Pending, see
strongtie.com/patents



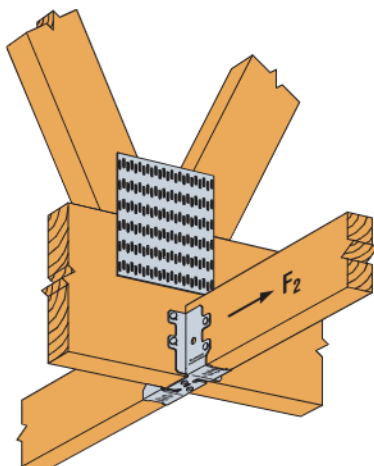
PFUD24
Half Part
Field bend/
separate
parts along
undersaddle
perforations



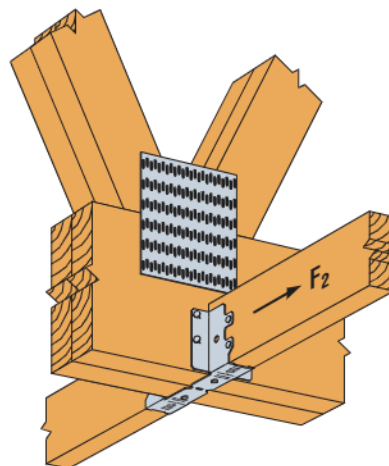
Typical PFUD24 Nailing
Top View
(PFUDS24 Similar)



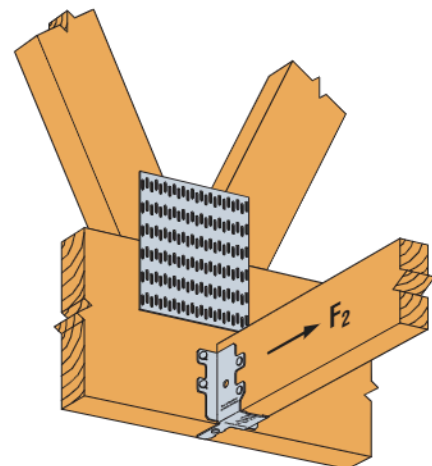
PFUDS24
Half Part
Field bend/separate
parts along undersaddle
perforations



Typical PFUD24 Installation
for 1-Ply Truss



Typical PFUDS24 Installation
for 2-Ply Truss



Typical PFUD24 — Half-Part Installation
(PFUDS24 half part similar)

Post-Frame Undersaddle Hanger (cont.)

SD Many of these products are approved for installation with Strong-Drive® SD Connector screws. See pp. 380–382 for more information.

PFUD Allowable Loads

Model No.	Joist Plies	BF (in.)	Fasteners (in.)			DF/SP Allowable Loads			SPF/HF Allowable Loads			Code Ref.
			Bottom	Face	Joist	Uplift (160)	Download (100/115/125/160)	F ₂ (160)	Uplift (160)	Download (100/115/125/160)	F ₂ (160)	
PFUD24	Single 2x	1½	(2) 0.148 x 1½	(8) 0.148 x 1½	(8) 0.148 x 1½	325	405	515	285	355	445	—
			—	(8) 0.148 x 1½	(8) 0.148 x 1½	395	415	—	340	330	—	
			(2) SD9112	(8) SD9112	(8) SD9112	375	580	645	325	460	565	
			—	(8) SD9112	(8) SD9112	430	470	—	375	370	—	
Half PFUD24	Single 2x	1½	(1) 0.148 x 1½	(4) 0.148 x 1½	(4) 0.148 x 1½	400	345	300	345	310	260	
			—	(4) 0.148 x 1½	(4) 0.148 x 1½	350	315	—	300	240	—	
			(1) SD9112	(4) SD9112	(4) SD9112	565	505	405	485	395	345	
			—	(4) SD9112	(4) SD9112	380	455	—	325	370	—	
PFUDS24	Double 2x	3¾	(2) 0.148 x 1½	(8) 0.148 x 1½	(8) 0.148 x 1½	325	485	510	285	430	450	
			—	(8) 0.148 x 1½	(8) 0.148 x 1½	395	415	—	340	335	—	
			(2) SD9112	(8) SD9112	(8) SD9112	375	630	750	325	520	660	
			—	(8) SD9112	(8) SD9112	430	470	—	375	370	—	
Half PFUDS24	Single 2x	1½	(1) 0.148 x 1½	(4) 0.148 x 1½	(4) 0.148 x 1½	400	345	275	345	310	235	
			—	(4) 0.148 x 1½	(4) 0.148 x 1½	350	315	—	300	240	—	
			(1) SD9112	(4) SD9112	(4) SD9112	565	505	410	485	395	360	
			—	(4) SD9112	(4) SD9112	380	455	—	325	370	—	

1. Uplift and F₂ loads have been increased for wind or earthquake loading, with no further increase allowed. Reduce where other loads govern.
2. Use minimum 2x4 purlin member.
3. Table allowable loads are for each supported member. Table fastener quantities are total quantities for both faces of the supporting member for the PFUD models and one face for the halved models.
4. Truss chord cross-grain tension may limit allowable loads in accordance with ANSI/TPI 1-2014/2022.
5. **Fasteners:** Nail dimensions in the table are listed diameter by length. SD screws are Simpson Strong-Tie Strong-Drive SD Connector screws.